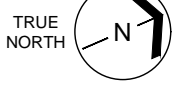
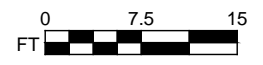


104

110

Access hatch from above AW208

Western Washington University (WWU) makes these documents available on an "as is" basis. All warranties and representations of any kind with regard to said documents are disclaimed, including the implied warranties of merchantability and fitness for a particular use. WWU does not warrant the documents against deficiencies of any kind.

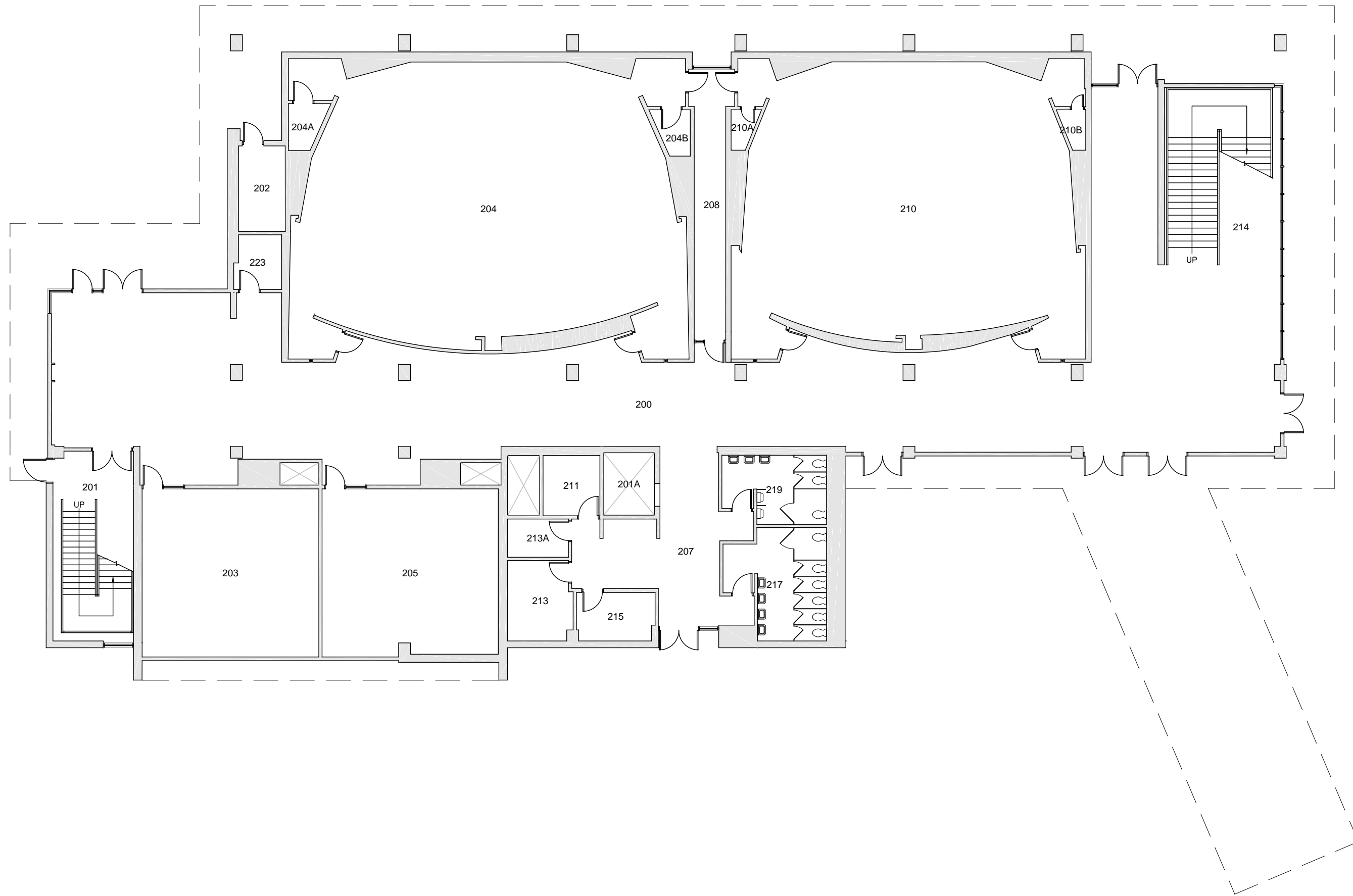


ACADEMIC INSTRUCTIONAL CENTER WEST
CRAWLSPACE

Date Revised: 03/11/2016

Last Sync With FAMIS: 09/22/2015

Building/Zone	AW
Floor #	1



Western Washington University (WWU) makes these documents available on an "as is" basis. All warranties and representations of any kind with regard to said documents are disclaimed, including the implied warranties of merchantability and fitness for a particular use. WWU does not warrant the documents against deficiencies of any kind.



TRUE NORTH



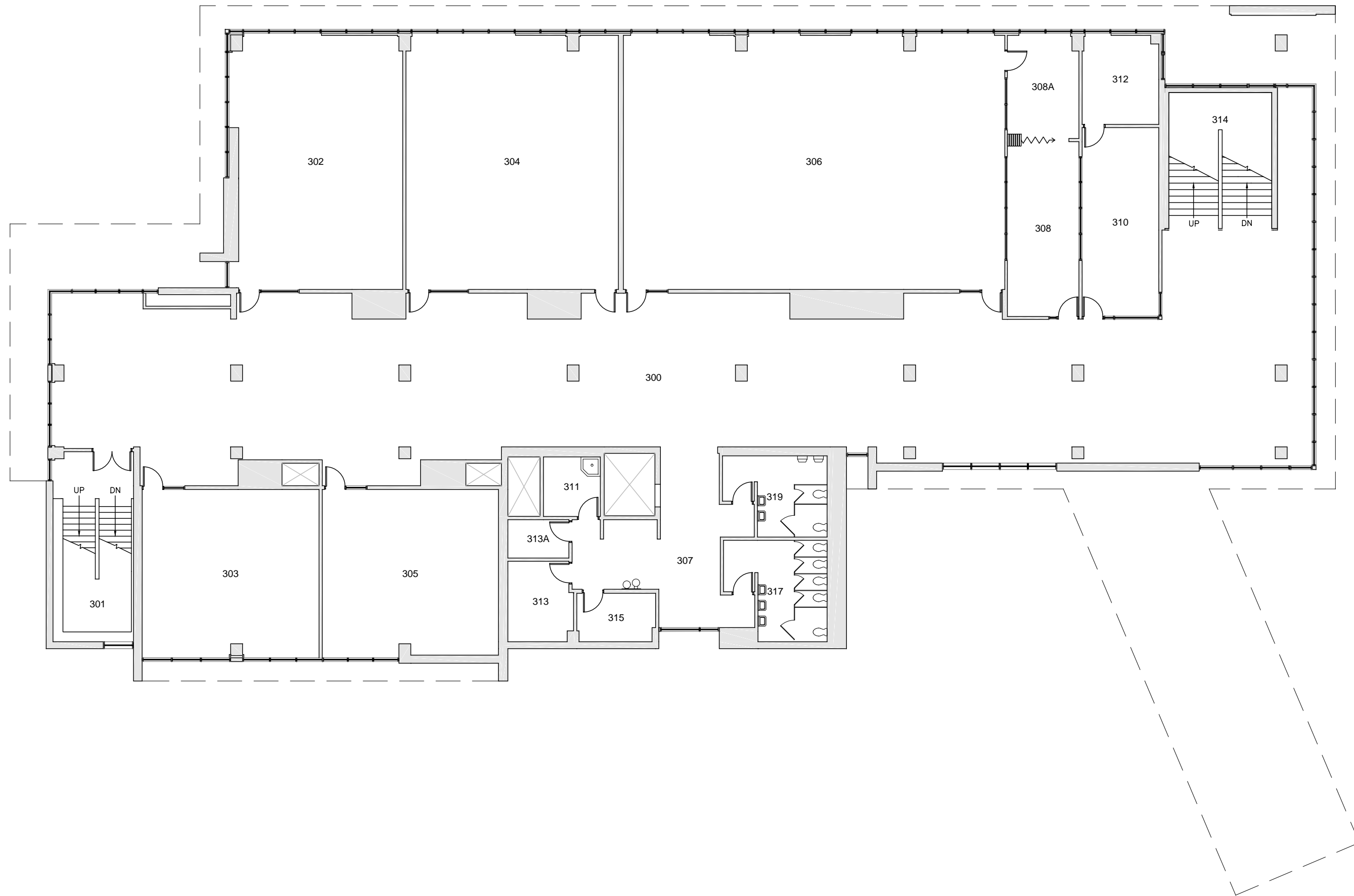
ACADEMIC INSTRUCTIONAL CENTER WEST

SECOND LEVEL

Date Revised: 03/11/2016

Last Sync With FAMIS: 09/22/2015

Building/Zone
AW
Floor #
2

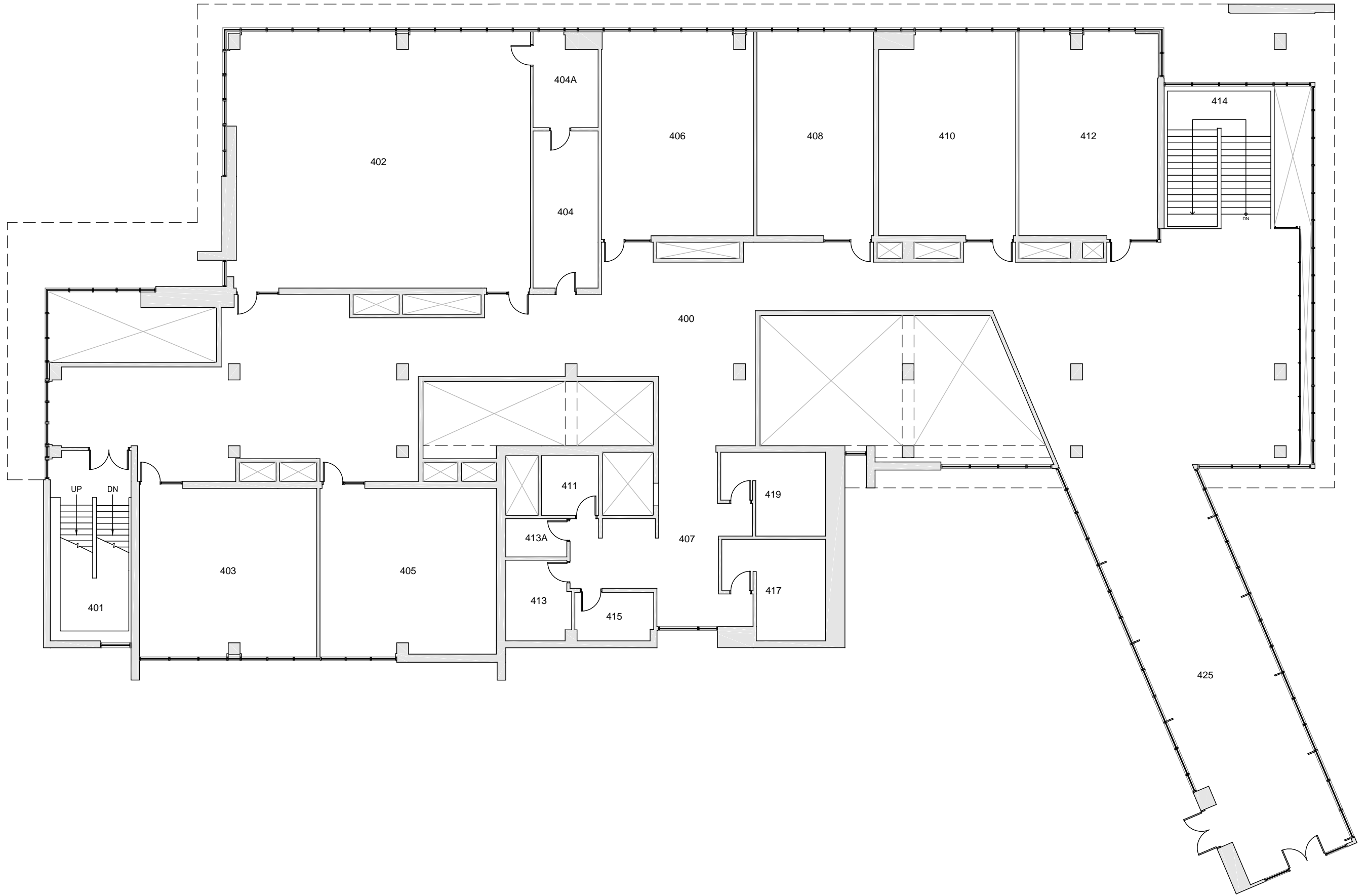


Western Washington University (WWU) makes these documents available on an "as is" basis. All warranties and representations of any kind with regard to said documents are disclaimed, including the implied warranties of merchantability and fitness for a particular use. WWU does not warrant the documents against deficiencies of any kind.



<h2 style="margin: 0;">ACADEMIC INSTRUCTIONAL CENTER WEST</h2> <p style="margin: 0;">THIRD LEVEL</p>	<p style="font-size: small;">Date Revised: 03/11/2016</p> <p style="font-size: small;">Last Sync With FAMIS: 09/22/2015</p>
--	---

<p style="font-size: x-small;">Building/Zone</p> <h1 style="margin: 0;">AW</h1>
<p style="font-size: x-small;">Floor #</p> <h1 style="margin: 0;">3</h1>



Western Washington University (WWU) makes these documents available on an "as is" basis. All warranties and representations of any kind with regard to said documents are disclaimed, including the implied warranties of merchantability and fitness for a particular use. WWU does not warrant the documents against deficiencies of any kind.



TRUE NORTH



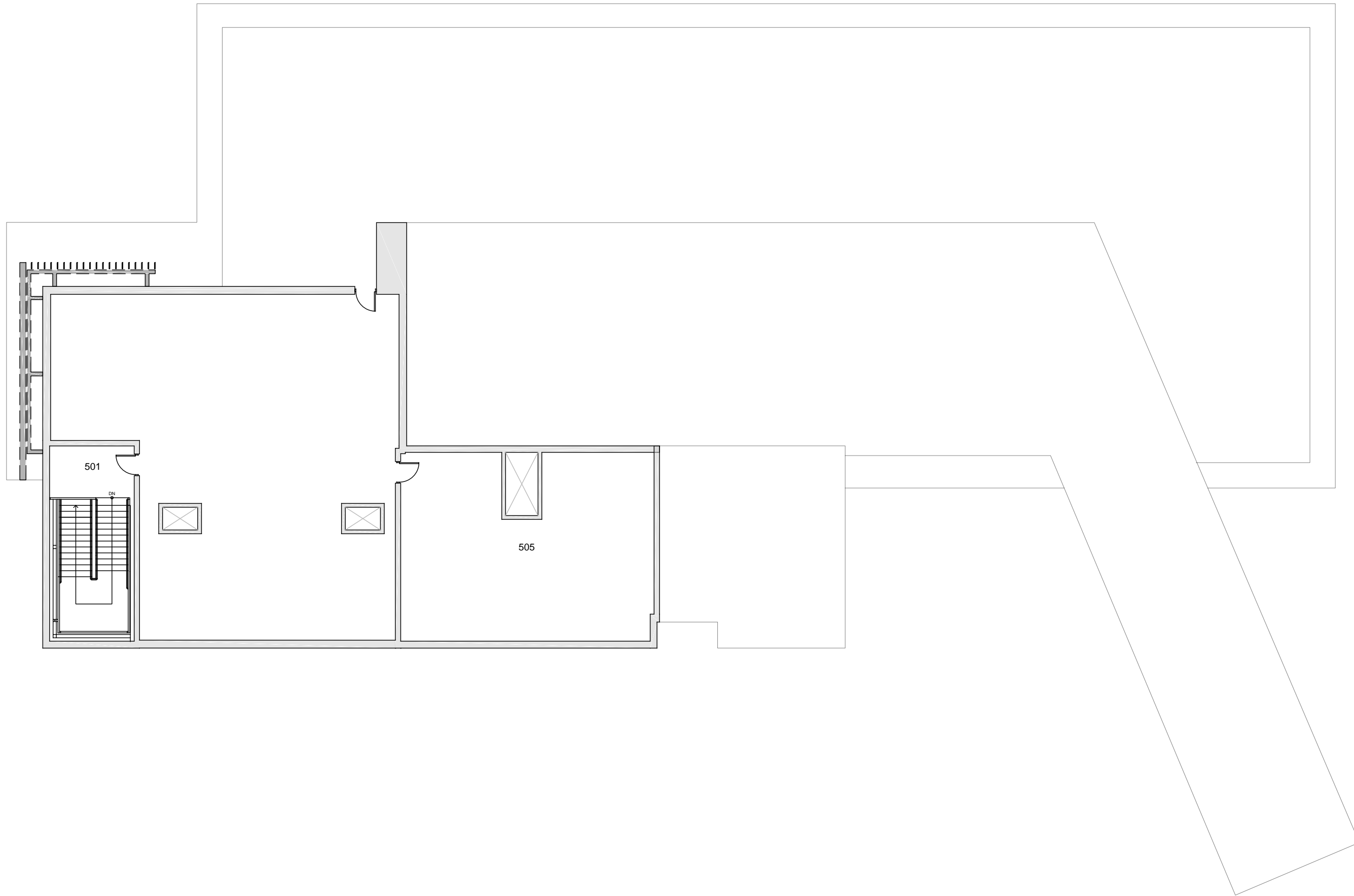
ACADEMIC INSTRUCTIONAL CENTER WEST

FOURTH LEVEL

Date Revised: 03/11/2016

Last Sync With FAMIS: 09/22/2015

Building/Zone
AW
Floor #
4



Western Washington University (WWU) makes these documents available on an "as is" basis. All warranties and representations of any kind with regard to said documents are disclaimed, including the implied warranties of merchantability and fitness for a particular use. WWU does not warrant the documents against deficiencies of any kind.



TRUE NORTH



ACADEMIC INSTRUCTIONAL CENTER WEST

PENTHOUSE / ROOF

Date Revised: 03/11/2016

Last Sync With FAMIS: 09/22/2015

Building/Zone

AW

Floor #

5