

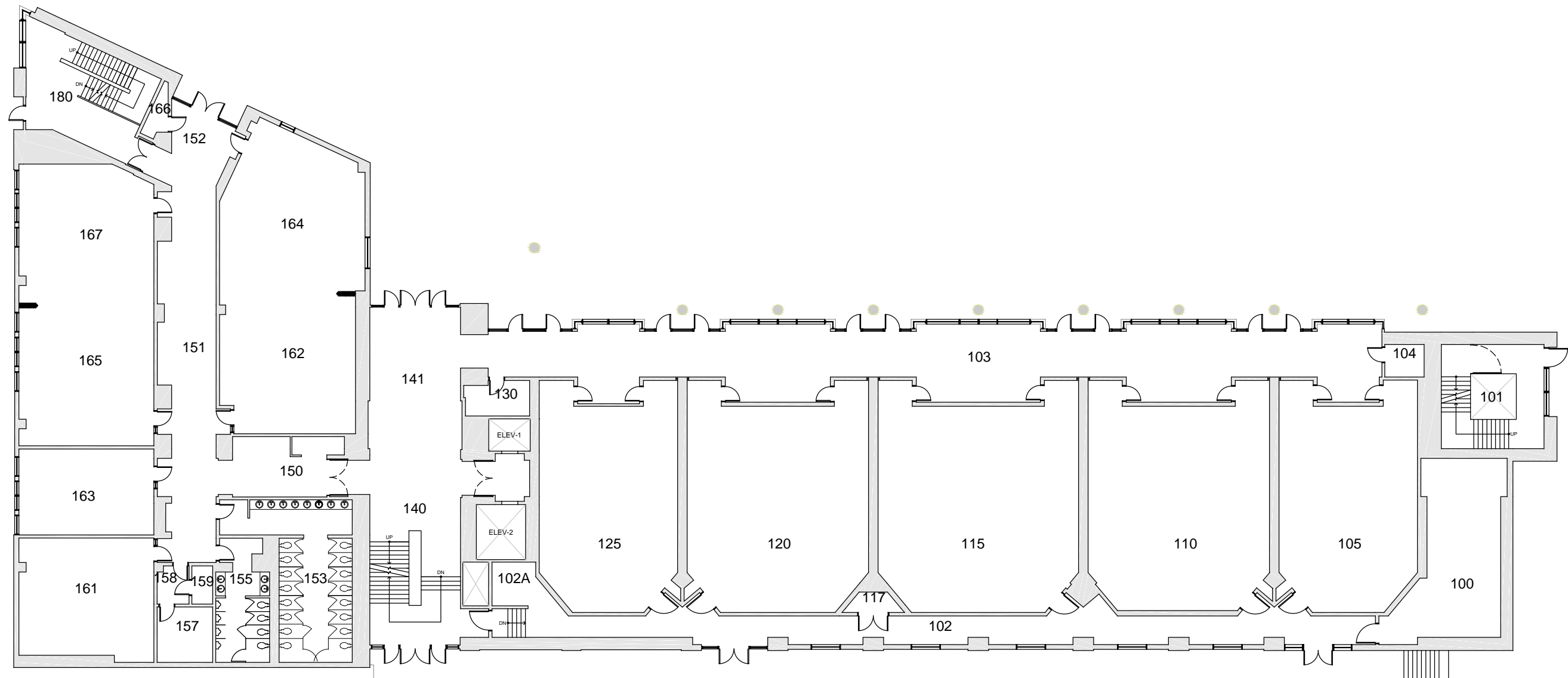
BASE FLOOR PLAN

Western Washington University (WWU) makes these documents available on an "as is" basis. All warranties and representations of any kind with regard to said documents are disclaimed, including the implied warranties of merchantability and fitness for a particular use. WWU does not warrant the documents against deficiencies of any kind.



<h2 style="margin: 0;">COMMUNICATION FACILITY</h2> <p style="margin: 0;">BASEMENT</p>	<small>Last Drawing Revision: 02/15/2017</small>	<small>Last Sync With AIM: 02/09/2017</small>
---------------------------------------------------------------------------------------	--------------------------------------------------	-----------------------------------------------

<small>Building</small> CF
<small>Floor #</small> B



BASE FLOOR PLAN

Western Washington University (WWU) makes these documents available on an "as is" basis. All warranties and representations of any kind with regard to said documents are disclaimed, including the implied warranties of merchantability and fitness for a particular use. WWU does not warrant the documents against deficiencies of any kind.



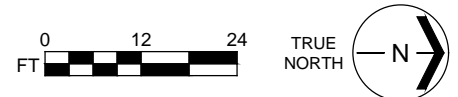
COMMUNICATION FACILITY	
FLOOR 1	
Last Drawing Revision: 04/21/2017	Last Sync With AIM: 02/09/2017

Building	CF
Floor #	01



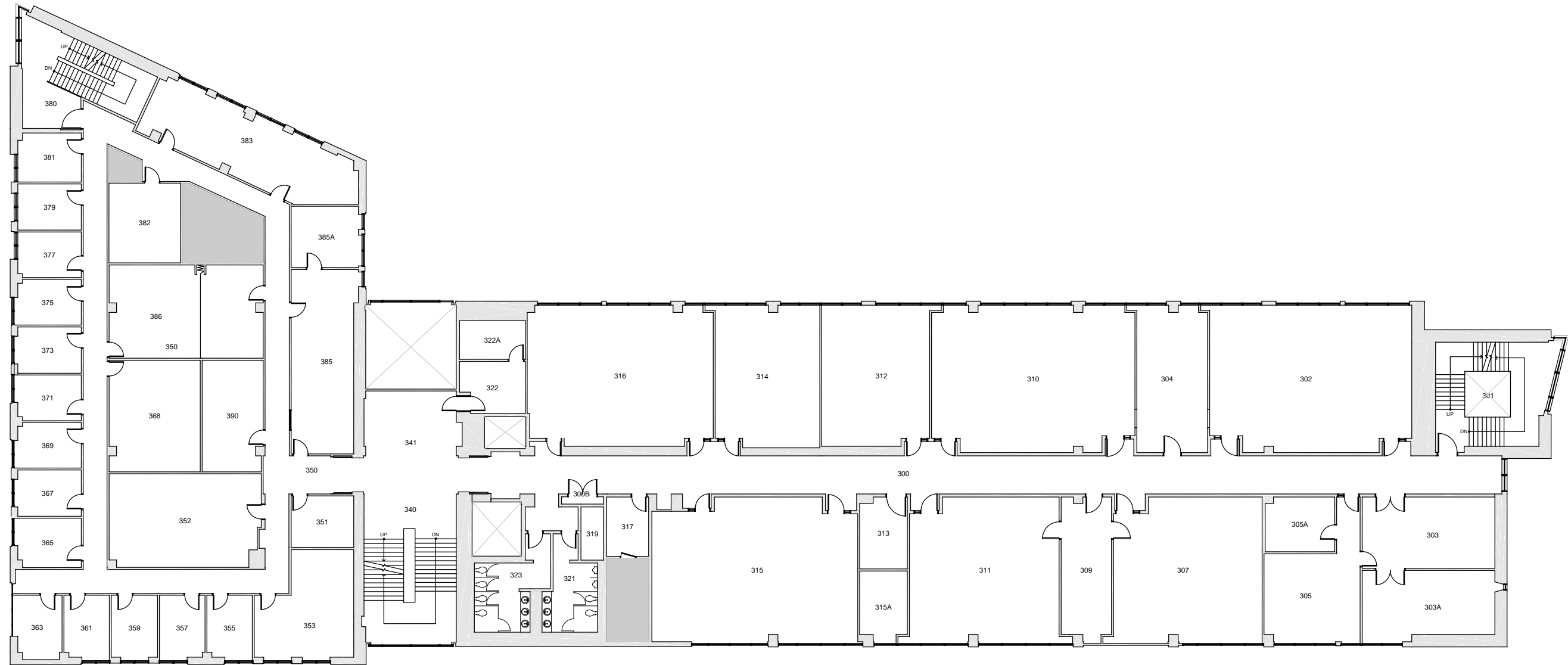
BASE FLOOR PLAN

Western Washington University (WU) makes these documents available on an "as is" basis. All warranties and representations of any kind with regard to said documents are disclaimed, including the implied warranties of merchantability and fitness for a particular use. WU does not warrant the documents against deficiencies of any kind.



COMMUNICATION FACILITY	
FLOOR 2	
Last Drawing Revision: 02/15/2017	Last Sync With AIM: 02/09/2017

Building	CF
Floor #	02



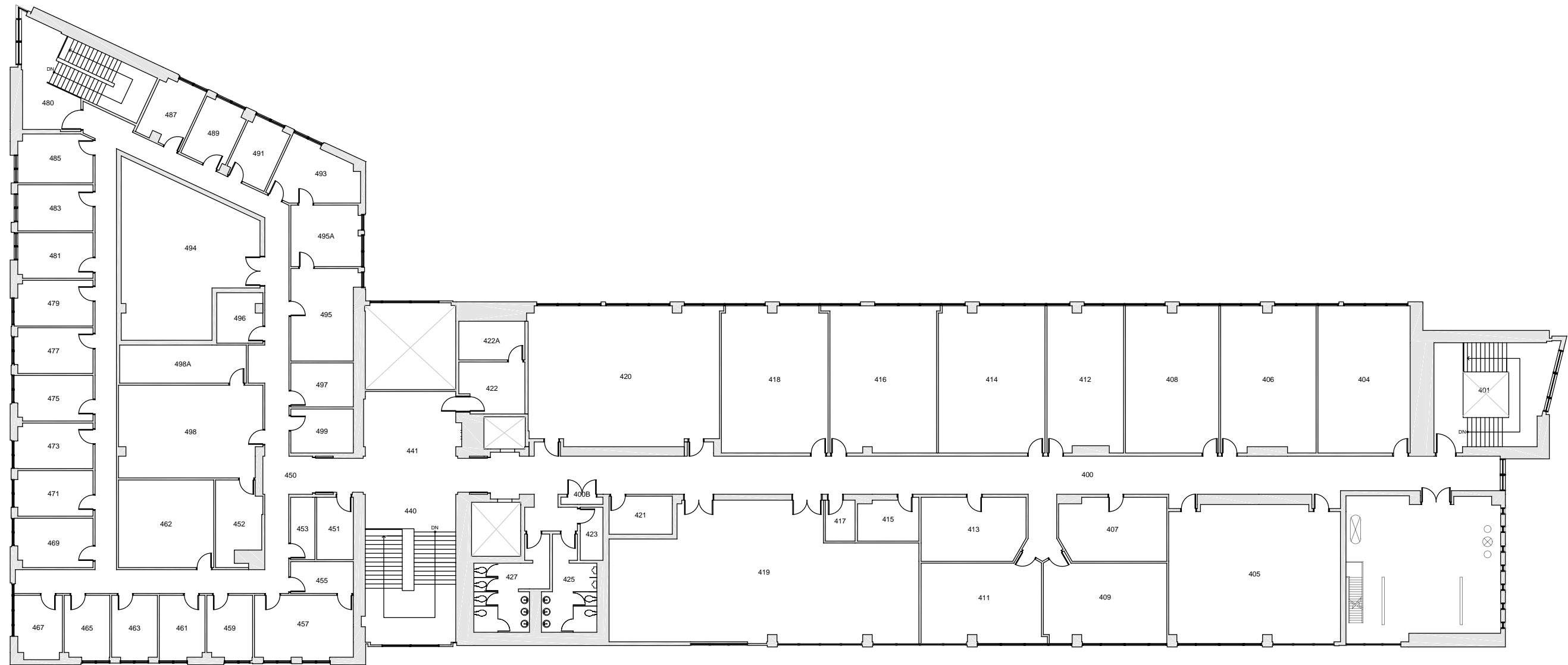
BASE FLOOR PLAN

Western Washington University (WU) makes these documents available on an "as is" basis. All warranties and representations of any kind with regard to said documents are disclaimed, including the implied warranties of merchantability and fitness for a particular use. WU does not warrant the documents against deficiencies of any kind.



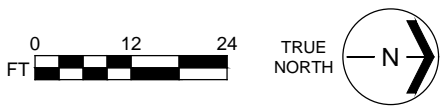
<h1>COMMUNICATION FACILITY</h1> <p>FLOOR 3</p>	<p>Last Drawing Revision: 02/15/2017</p> <p>Last Sync With AIM: 02/09/2017</p>
------------------------------------------------	--------------------------------------------------------------------------------

<p>Building</p> <h1>CF</h1>
<p>Floor #</p> <h1>03</h1>



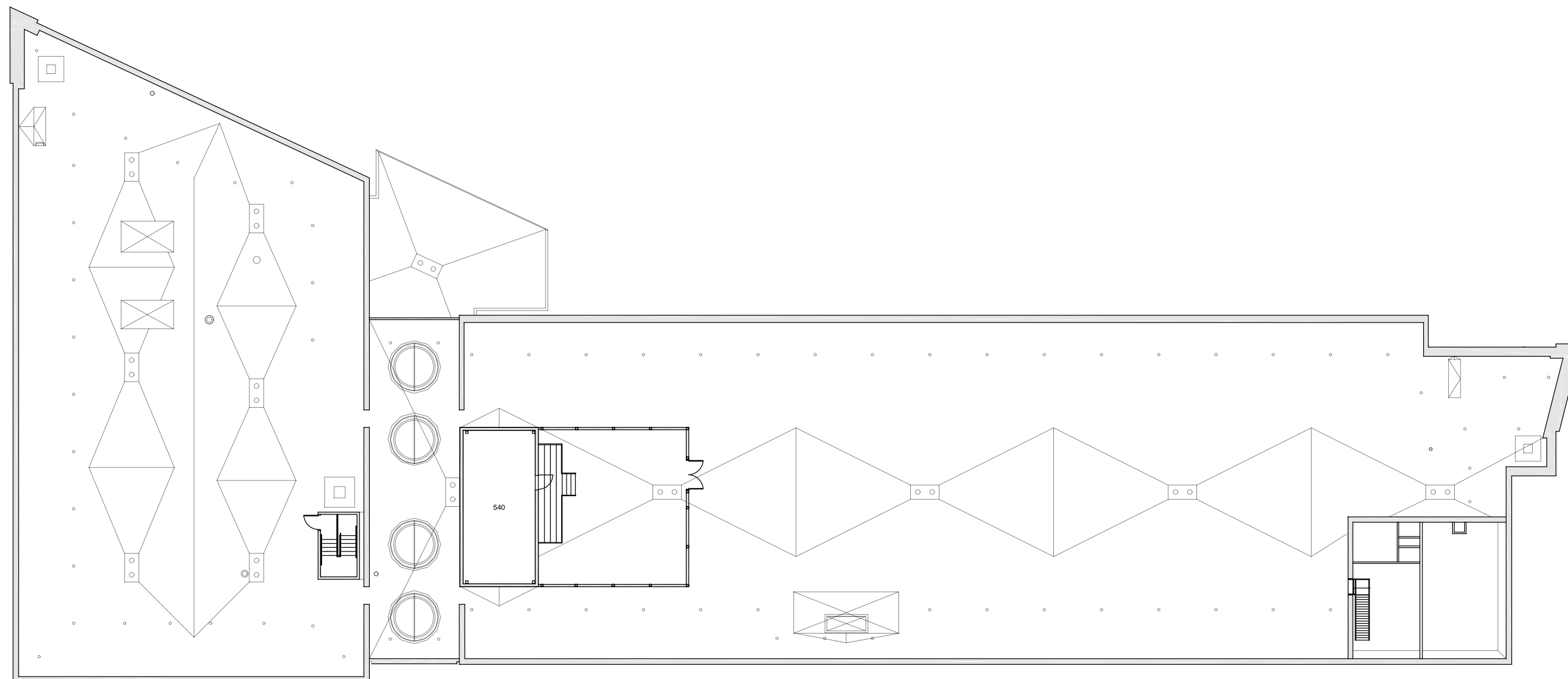
BASE FLOOR PLAN

Western Washington University (WWU) makes these documents available on an "as is" basis. All warranties and representations of any kind with regard to said documents are disclaimed, including the implied warranties of merchantability and fitness for a particular use. WWU does not warrant the documents against deficiencies of any kind.



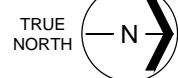
<h2>COMMUNICATION FACILITY</h2> <p>FLOOR 4</p> <p>Last Drawing Revision: 04/21/2017</p>	<p>Last Sync With AIM: 02/10/2017</p>
-----------------------------------------------------------------------------------------	---------------------------------------

Building	CF
Floor #	04



BASE FLOOR PLAN

Western Washington University (WWU) makes these documents available on an "as is" basis. All warranties and representations of any kind with regard to said documents are disclaimed, including the implied warranties of merchantability and fitness for a particular use. WWU does not warrant the documents against deficiencies of any kind.



COMMUNICATION FACILITY
ROOF

Last Drawing Revision: 02/15/2017

Last Sync With AIM: 03/11/2016

Building	CF
Floor #	R