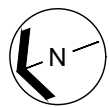


Western Washington University (WWU) makes these documents available on an "as is" basis. All warranties and representations of any kind with regard to said documents are disclaimed, including the implied warranties of merchantability and fitness for a particular use. WWU does not warrant the documents against deficiencies of any kind.



TRUE NORTH



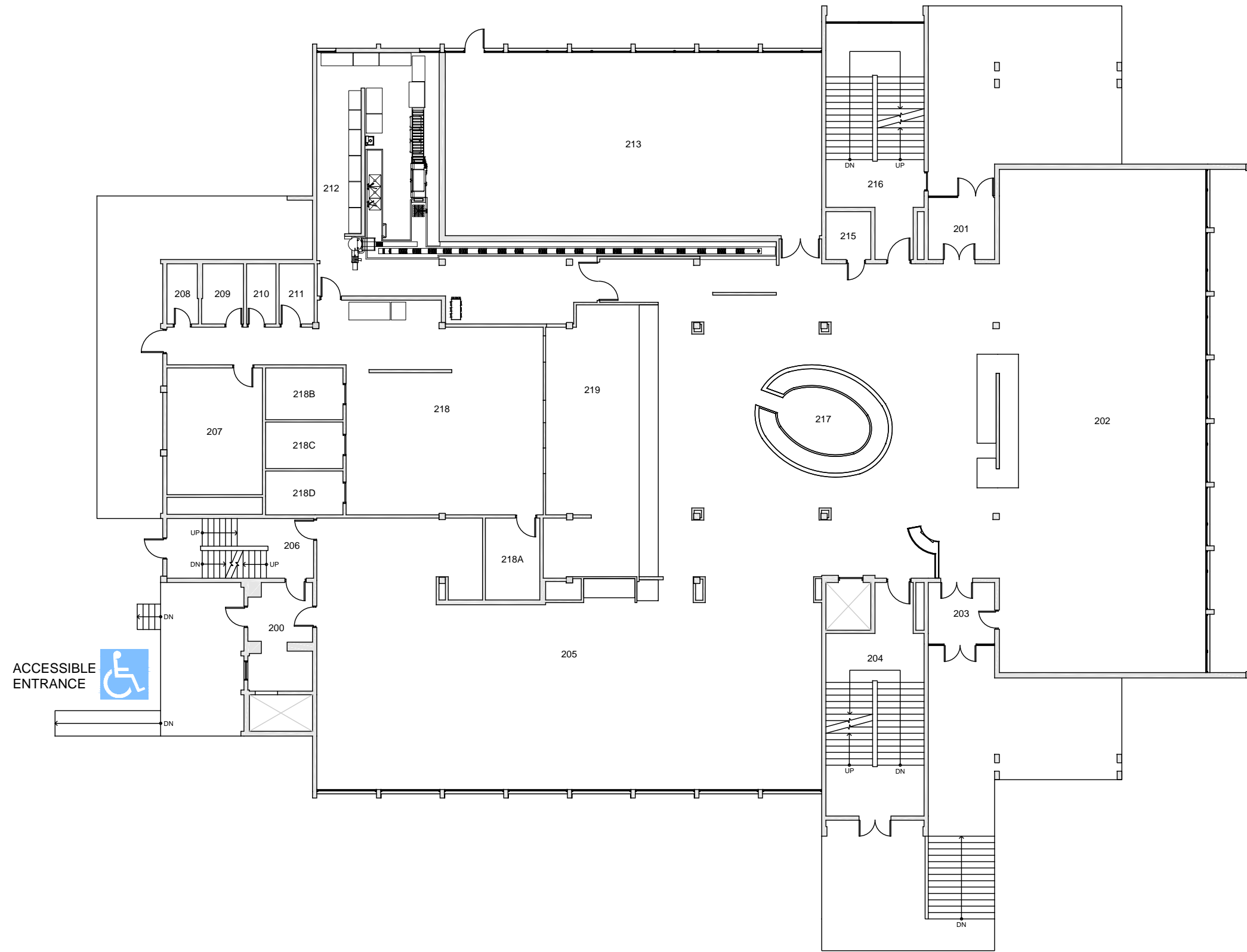
Date Revised: 03/14/2016

# FAIRHAVEN COLLEGE

FLOOR 1

Last Sync With FAMIS: 12/23/2015

Building/Zone	FA
Floor #	1



Western Washington University (WWU) makes these documents available on an "as is" basis. All warranties and representations of any kind with regard to said documents are disclaimed, including the implied warranties of merchantability and fitness for a particular use. WWU does not warrant the documents against deficiencies of any kind.



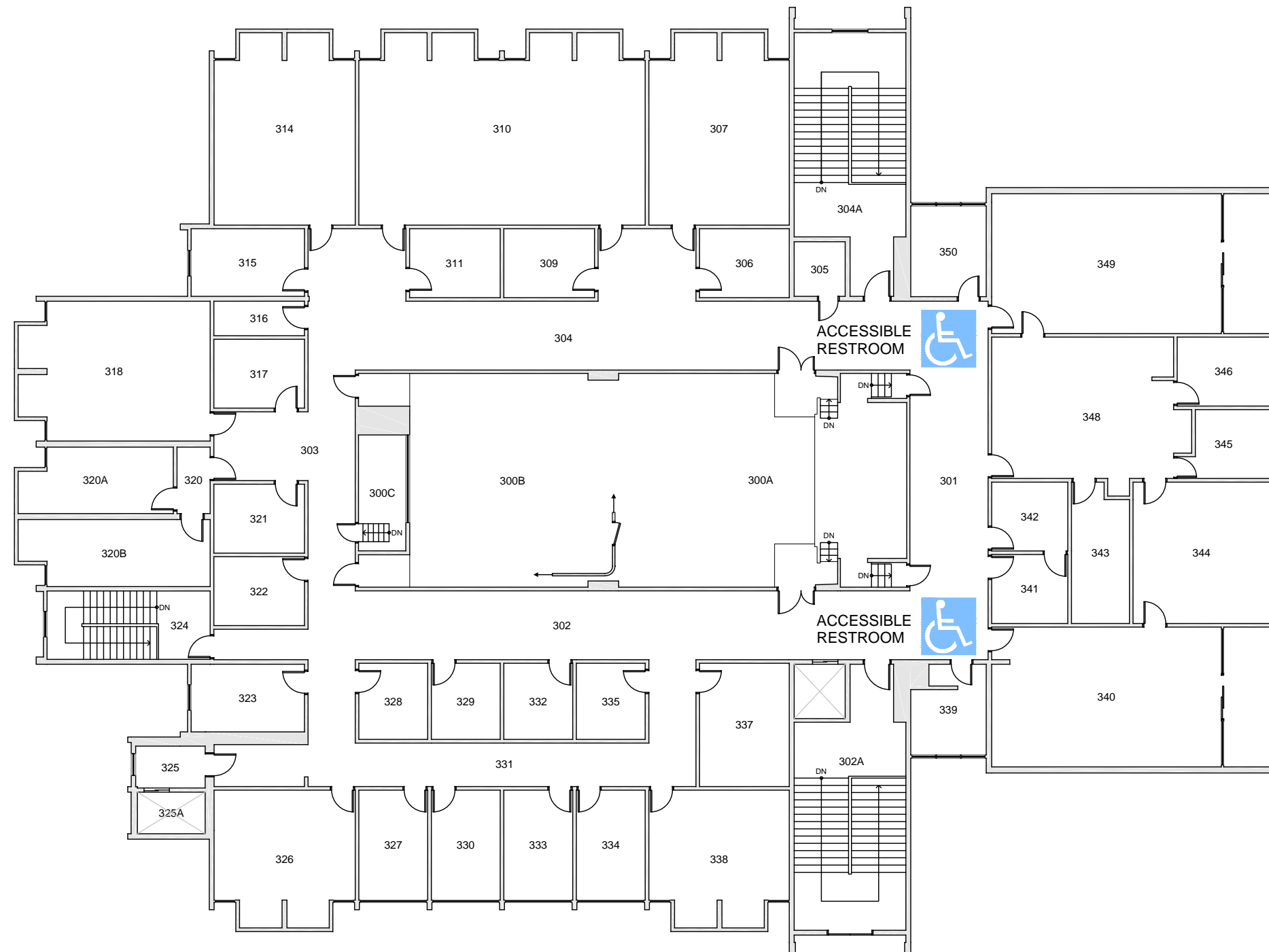
Date Revised: 03/14/2016

# FAIRHAVEN COLLEGE

## FLOOR 2

Last Sync With FAMIS: 12/23/2015

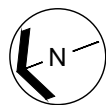
Building/Zone	FA
Floor #	2



Western Washington University (WWU) makes these documents available on an "as is" basis. All warranties and representations of any kind with regard to said documents are disclaimed, including the implied warranties of merchantability and fitness for a particular use. WWU does not warrant the documents against deficiencies of any kind.



TRUE NORTH



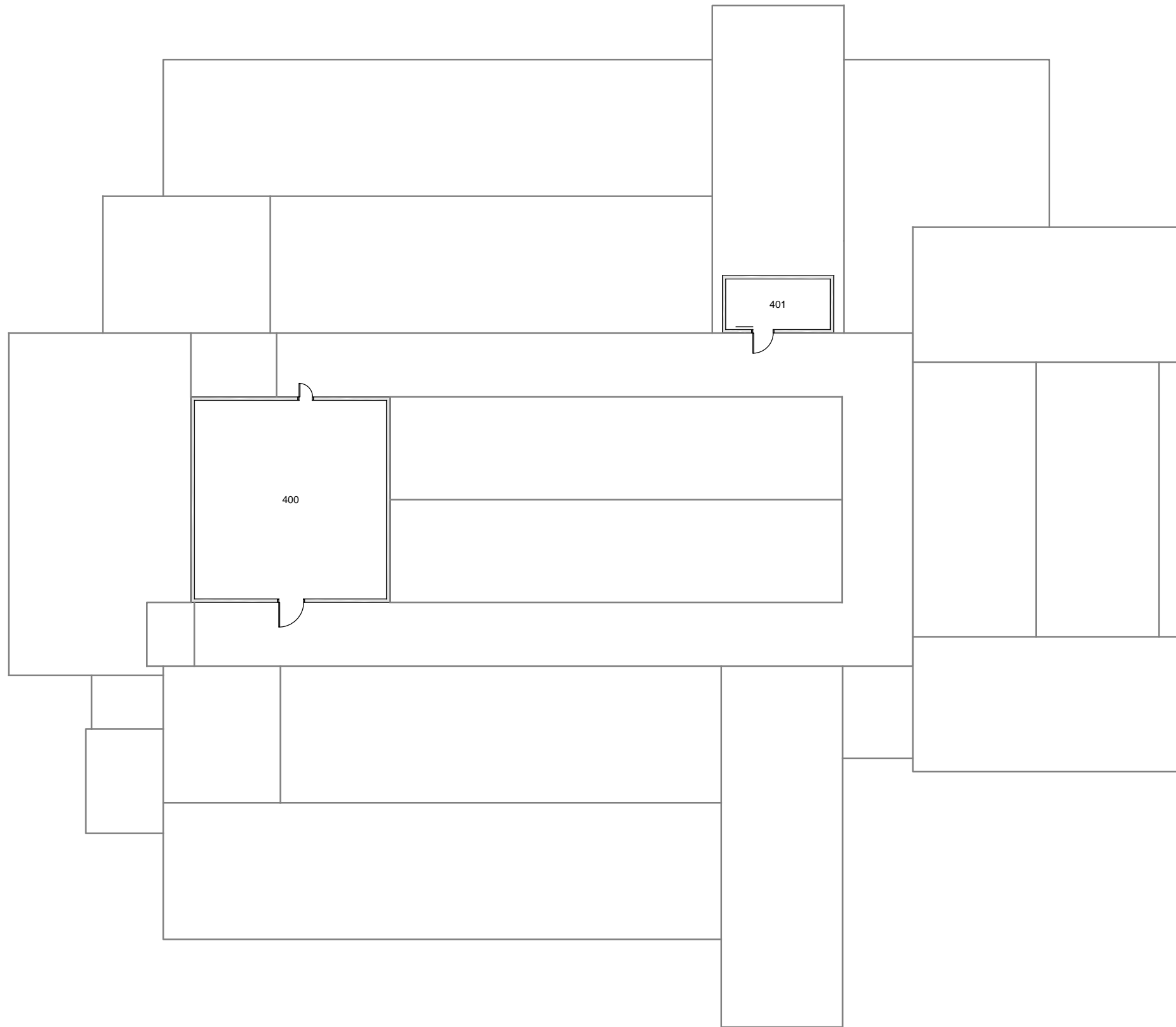
Date Revised: 03/14/2016

# FAIRHAVEN COLLEGE

## FLOOR 3

Last Sync With FAMIS: 12/23/2015

Building/Zone  
**FA**  
Floor #  
**3**



Western Washington University (WWU) makes these documents available on an "as is" basis. All warranties and representations of any kind with regard to said documents are disclaimed, including the implied warranties of merchantability and fitness for a particular use. WWU does not warrant the documents against deficiencies of any kind.



TRUE NORTH



Date Revised: 03/14/2016

# FAIRHAVEN COLLEGE

ATTIC

Last Sync With FAMIS: 12/23/2015

Building/Zone

FA

Floor #

4