

Western Washington University (WWU) makes these documents available on an "as is" basis. All warranties and representations of any kind with regard to said documents are disclaimed, including the implied warranties of merchantability and fitness for a particular use. WWU does not warrant the documents against deficiencies of any kind.



TRUE NORTH



MARINE EDUCATION CNT SHANNONPT

BASEMENT

Date Revised: 04/05/2016

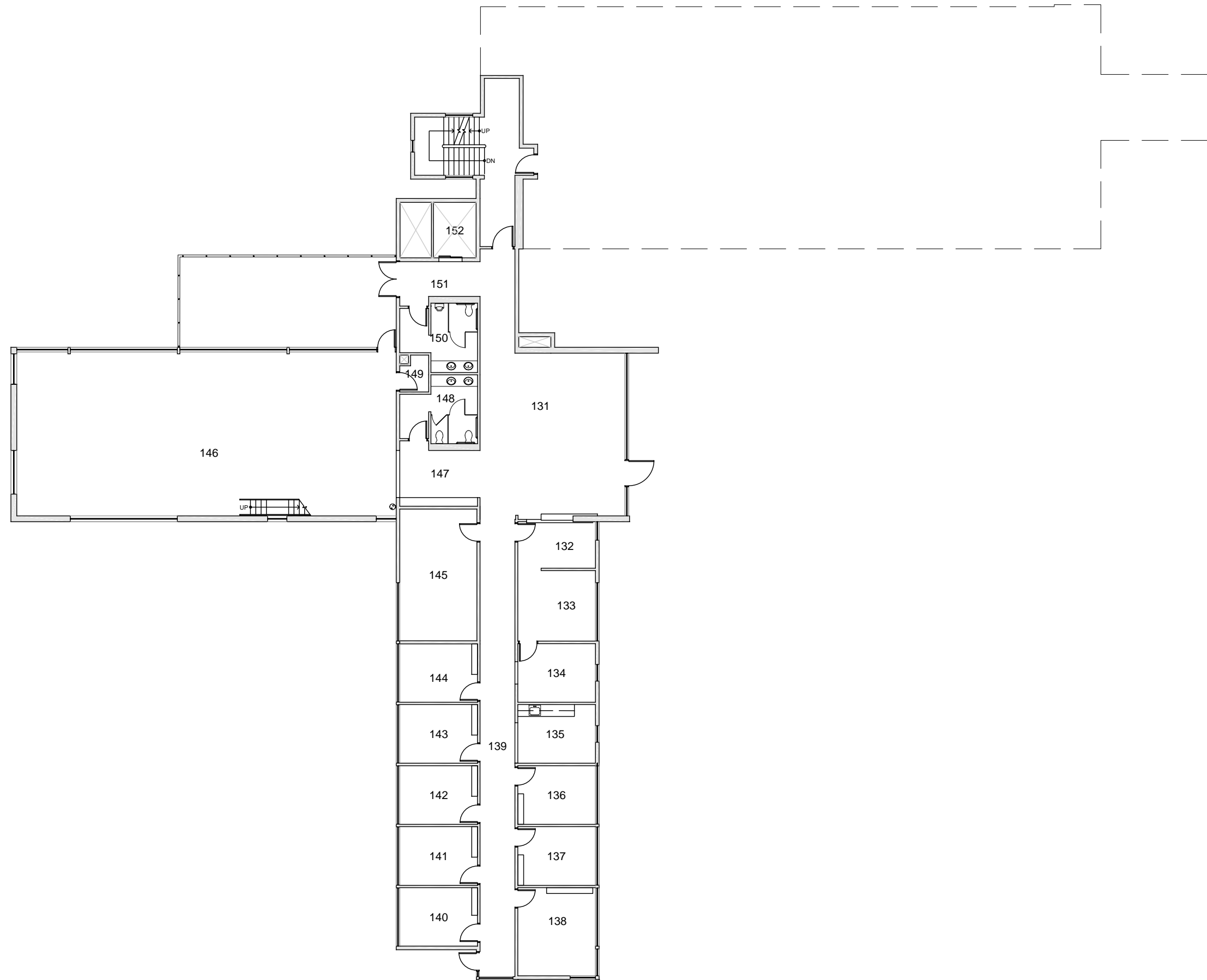
Last Sync With FAMIS: 11/20/2015

Building/Zone

ME

Floor #

B



Western Washington University (WWU) makes these documents available on an "as is" basis. All warranties and representations of any kind with regard to said documents are disclaimed, including the implied warranties of merchantability and fitness for a particular use. WWU does not warrant the documents against deficiencies of any kind.



TRUE NORTH



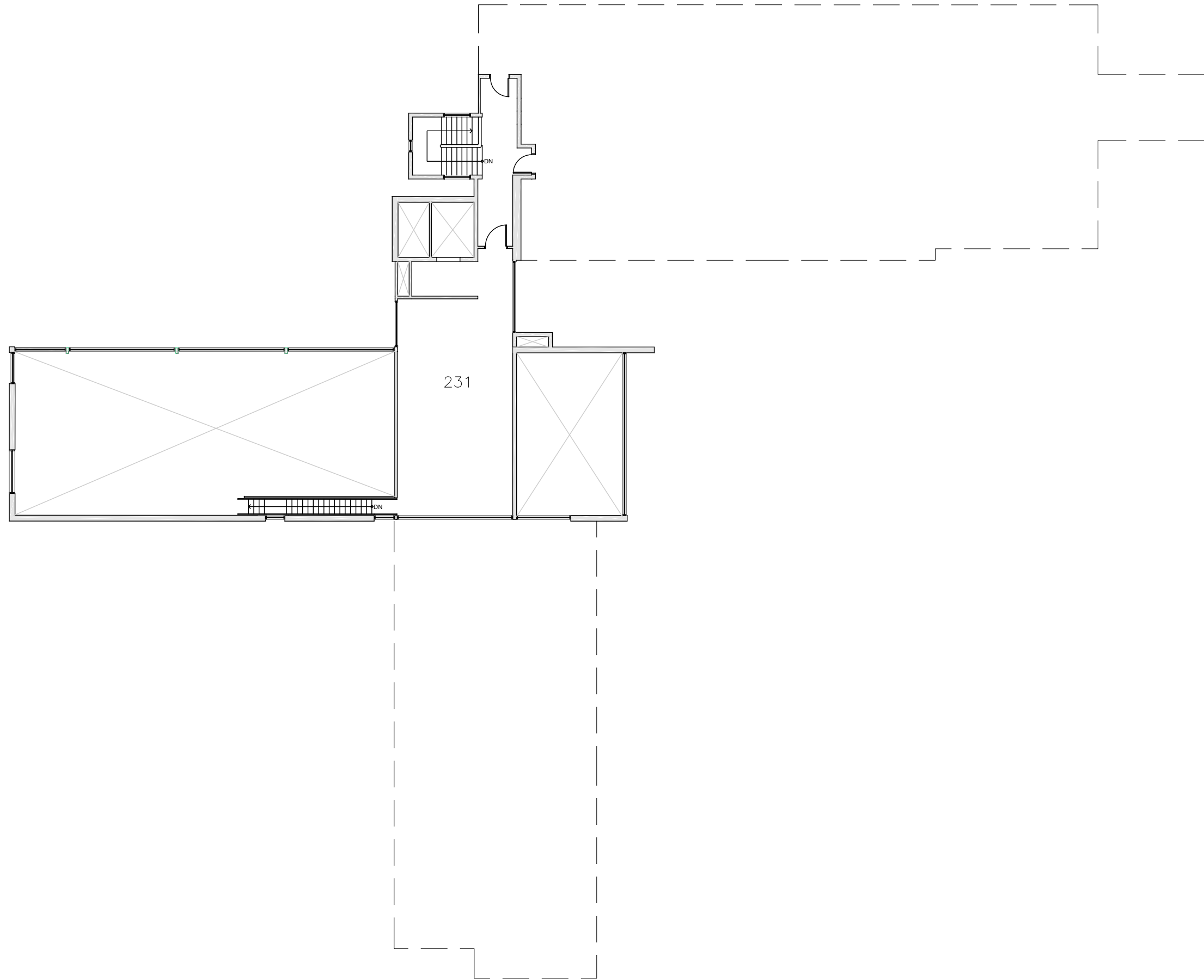
MARINE EDUCATION CNT SHANNONPT

FLOOR 1

Date Revised: 04/05/2016

Last Sync With FAMIS: 11/20/2015

Building/Zone	ME
Floor #	1



Western Washington University (WWU) makes these documents available on an "as is" basis. All warranties and representations of any kind with regard to said documents are disclaimed, including the implied warranties of merchantability and fitness for a particular use. WWU does not warrant the documents against deficiencies of any kind.



TRUE NORTH



MARINE EDUCATION CNT SHANNONPT
FLOOR 2

Date Revised: 04/05/2016

Last Sync With FAMIS: 11/20/2015

Building/Zone

ME

Floor #

2