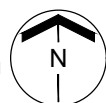


BASE FLOOR PLAN

Western Washington University (WWU) makes these documents available on an "as is" basis. All warranties and representations of any kind with regard to said documents are disclaimed, including the implied warranties of merchantability and fitness for a particular use. WWU does not warrant the documents against deficiencies of any kind.

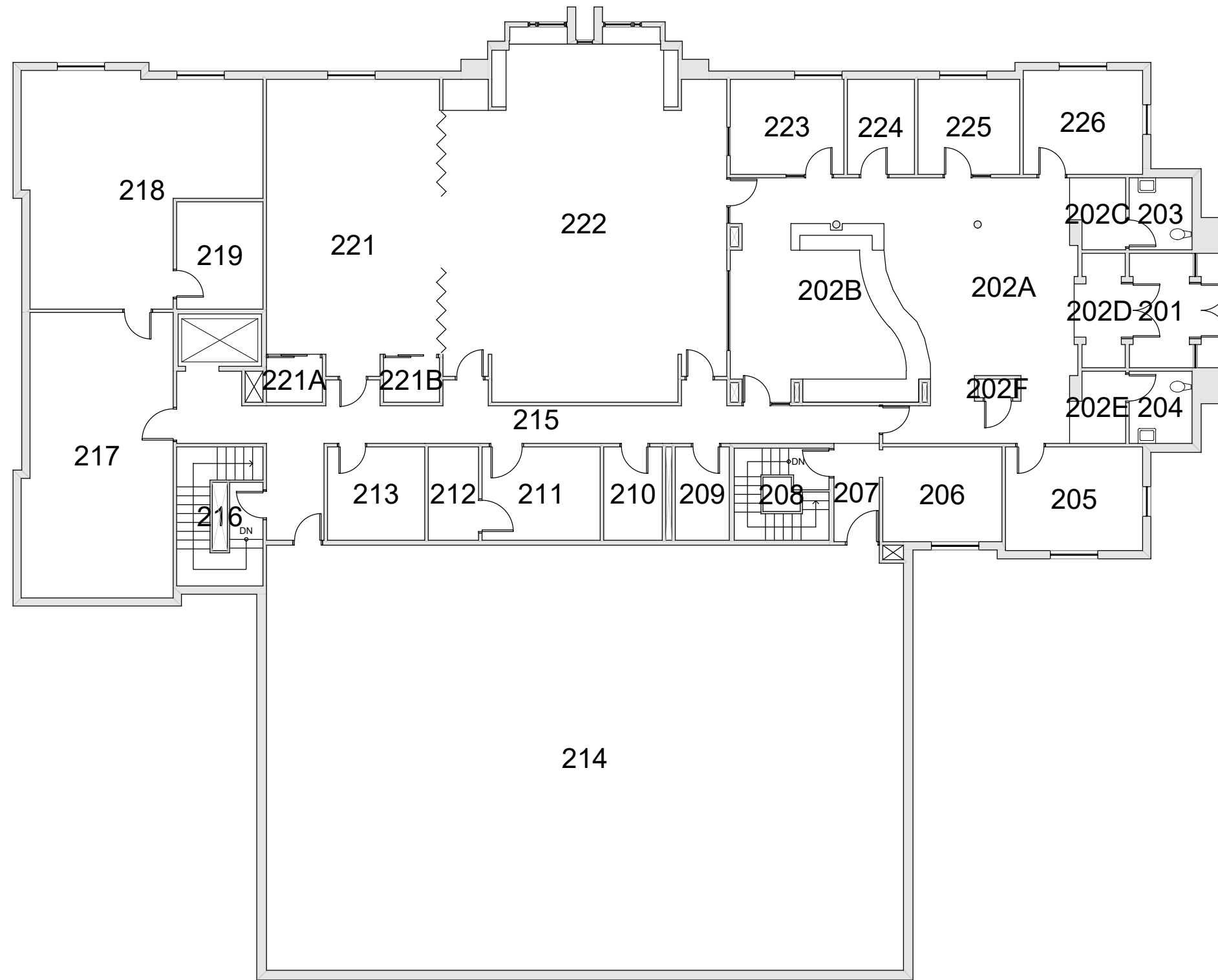


ARCHIVES BUILDING
FLOOR 1

Last Drawing Revision: 04/13/2020

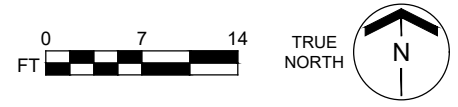
Last Sync With AIM: 02/09/2017

| | |
|----------|-----------|
| Building | AB |
| Floor # | 1 |



BASE FLOOR PLAN

Western Washington University (WWU) makes these documents available on an "as is" basis. All warranties and representations of any kind with regard to said documents are disclaimed, including the implied warranties of merchantability and fitness for a particular use. WWU does not warrant the documents against deficiencies of any kind.



| | | |
|---|--|---|
| <h2>ARCHIVES BUILDING</h2> <p>FLOOR 2</p> | | <p>Building AB</p> <p>Floor # 2</p> |
| <p>Last Drawing Revision: 04/13/2020</p> | | <p>Last Sync With AIM: 02/09/2017</p> |